

Metro Marine Modellers

Membership in the Metro Marine Modellers is open to anyone who shares in the goals of the club. Adult membership gives you the opportunity to meet other model boaters, eligibility to enter events and regattas, and vote in the affairs of the club. The fees go to pay for the use of Humber Bay Pond through permit and licensing fees, pond maintenance, rescue boat, markers and site storage, insurance coverage during sanctioned events, and various educational, trophy and recognition programs.

Please print:
Name _____
Address _____
City _____
Postal Code _____ Prov. _____
Phone # _____
Email _____

Membership Fee (\$35) \$_____

Family Membership (\$50) \$_____

Junior Membership (\$10) \$_____

TOTAL \$_____

Complete and send this form along with your cheque or money order payable to

Metro Marine Modellers to:-

Metro Marine Modellers
Membership Application
c/o Photo Innovations
P.O. Box 54596
1771 Avenue Road
North York, ON, M5M 4N5

Links

Metro Marine Modellers

<http://www.metromarine.org/sail.html>

<http://www.metromarine.org/membership.html>

CRYA - Canadian Radio Yachting Assoc

<http://www.crya.ca/> for registration & sail numbers

AMYA - American Model Yachting

<http://www.theamya.org/> for RC Sailing info

Rules

Many new sailors are worried that they don't know the rules. The rules are based on "do no harm" and are for safety reasons. The more competitive you want to be in regattas the more detailed knowledge you will want. Get started with the basics at this site for beginners by Lester Gilbert.

<http://www.onemetre.net/Race/RRSguide/RRS4.htm>

For complete rules

See <http://www.theamya.org/resources/RRS2009-2012.pdf>

Come Sail With Us



Model Yachting. Doing it Your Way

For some, the interest in sailing model yachts as a child, was the simple pleasure of seeing a model make its way across the pond driven solely by the wind. Others have a full size sailing and racing background and discover that model yachting requires the same skills and competitive tactics. Still others start as craftsmen, drawn to the creation of a fine yacht replica.

There is room for all of these enthusiasts in the Metro Marine Modellers club. MMM is the oldest established model boat club in Ontario, and considered by many to be one of the finest in the country. It is devoted to promoting designing, building, racing, and the preservation of all types and sizes of model ships, boats and craft.

In addition to these goals, the Sail Division of the club will introduce you to racing Radio Controlled sail boats

Radio Control Sailing in the area

The Toronto Metro Marine Modellers Sail Group, invite you to come and visit us. We look forward to handing you a transmitter and showing you how much fun it is to sail or race by radio control.

The location of our sailing site is in Humber Bay Park East, situated just west of the Humber River at the foot of Parklawn Road, Toronto. The site is dedicated to all types of model sailboats.

The sailors meet every Thursday for fun sailing and workshops on sailing, tuning and rules and almost every weekend, for regattas. For these regattas, the club has a permit for exclusivity of the water. You may sail for fun any day of the week.

The Classes of boats that our club sails on a regular basis are

- Soling One Meter
- Victoria
- International One Metre, (IOM)

By "Class" it is meant that every boat meets the same measurement specifications as the other boats in the class. This ensures equality for and during racing competition.

If you have another type of boat you are certainly welcome, or just stop by the pond and watch.

Visit us on the Internet also, if you wish. We are at www.metromarine.org/membership.html You will see our schedule of events and more information on our club.

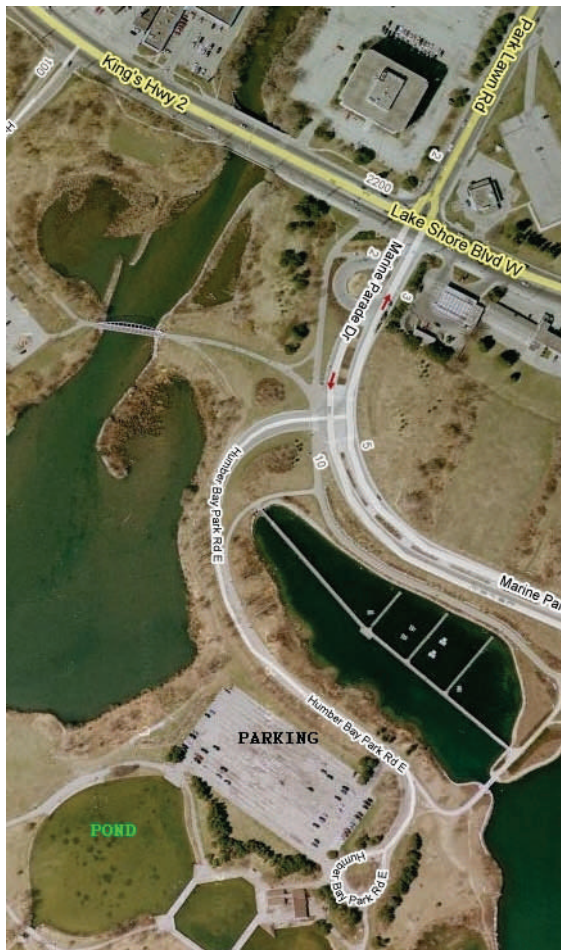
Our Club meets on the fourth Friday of every month from September until June, The sail group also meet at members homes at various times .

I

HOW TO GET STARTED

- **Come out** on any Thursday to Humber Bay Pond, introduce yourself to one of our friendly sailors and try it out
- **Location:** at the end of Park Lawn Road after crossing Lake Shore Boulevard you turn right and follow the road to the parking lot. (see map below)
- **Surf the internet** for more information (see links on back page)
- **Join Metro Marine Modellers** (link on back page)
- **Build your boat** or ask about pre-built / used boats

We hope that you will join us in the hobby



I

I

Radio Controlled Racing

Radio controlled racing is conducted using the same rules, tactics and strategies governing full size boats. Local, Regional and National Regattas are held annually and are usually two day regattas, giving you the opportunity of meeting and swapping ideas.

For racing, most members of MMM also belong to the Canadian Radio Yachting Association, which is dedicated solely to model yachting in Canada. Being a member of the CRYA will provide you with a membership card, a unique sail number for your boat and the names of others with the same model or class. You will also receive, quarterly, the Canadian Radio Yachting Newsletter. The only publication dedicated to all facets of model yachting in Canada. Membership is open to all, so join today and be a part of this growing multi-faceted hobby



Metro Marine Modellers:
Ed Gillis Sail Captain
ed.gillis@sympatico.ca

I